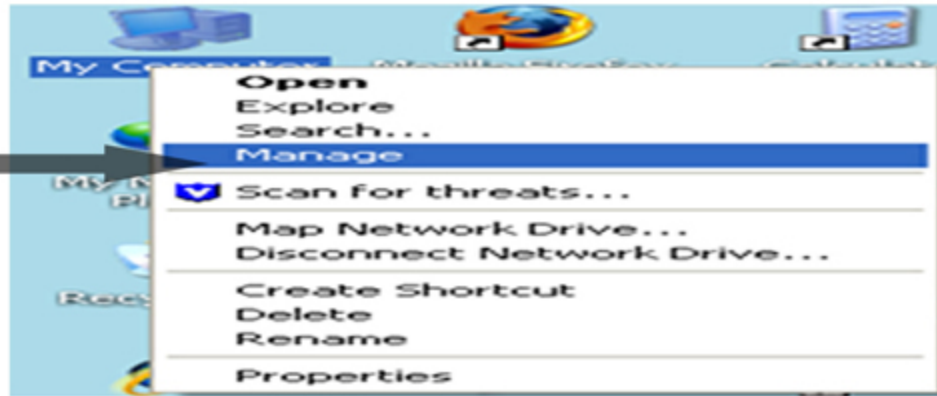


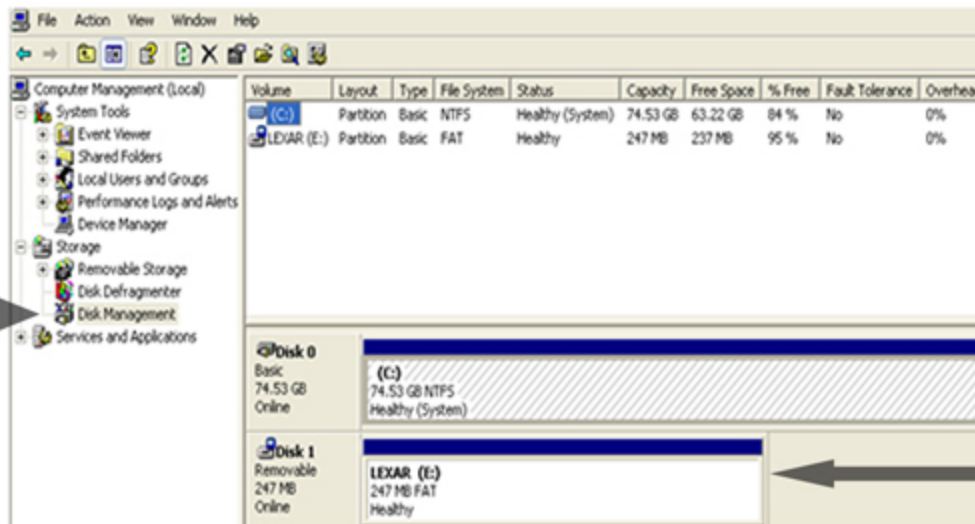
Changing the drive letter for your flash drive

If you cannot access the content of your flash drive as you plug it in, you should follow the steps explained below:

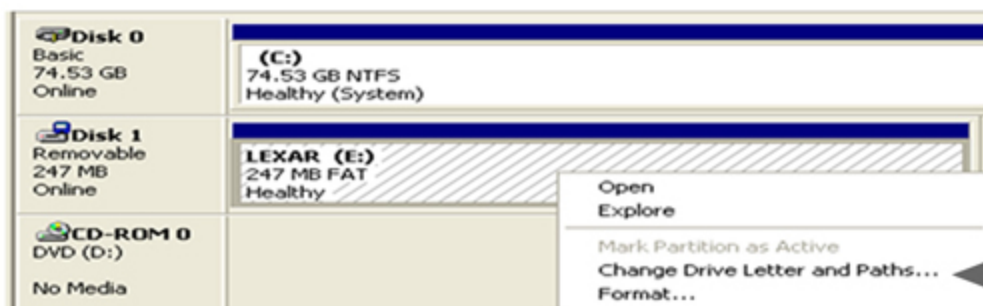
Right click My Computer icon from the desktop, then click Manage.



Click Disk Management and list of drive letters in use will appear on the right.

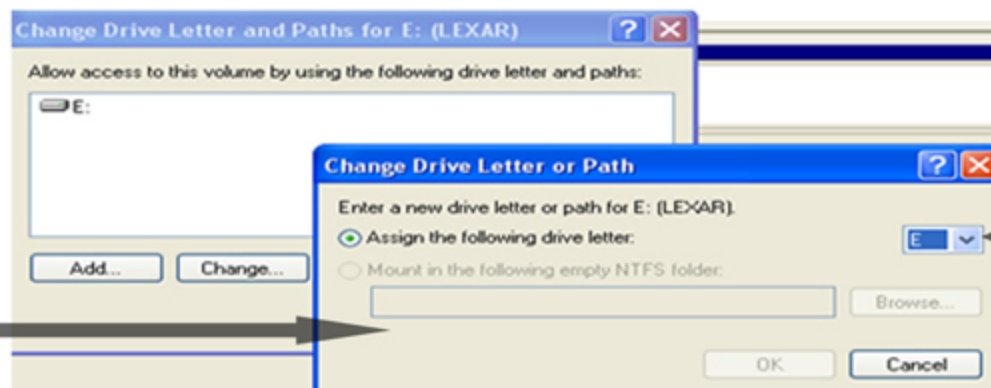


Right click on the box representing your flash drive.



Right click to select Change Drive Letter and Paths.

Click the drive letter that you want to use, and then click OK.



Click the select button.