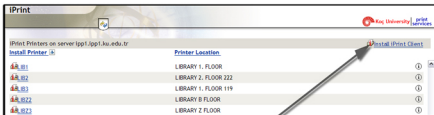


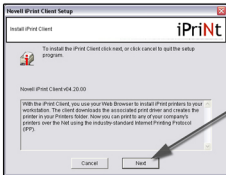
HOW TO TAKE PRINT-OUTS FROM YOUR LAPTOPS IN THE LIBRARY?

You may take print outs from your laptops in the Library. Two printers are assigned for this purpose. These printers are located at 24-Hour Study Halls. Their names are LIB22 and LIB23.

Firstly; you should visit IPP service page accessible at <http://ipp1.ku.edu.tr/ipp> .



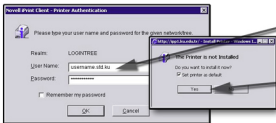
Novell IPP service is only supported with Microsoft Internet Explorer.
Click "Install iPrint Client" link and save nipp.exe to your computer. After successful download, double click nipp.exe and choose "run" to start setup.



Click next to continue setup. Click "Finish" to complete installation and close window.

Please close all active Internet Explorer windows and restart it.

Re-open <http://ipp1.ku.edu.tr/ipp> web site and please make sure to disable pop-up blocker or to allow pop-up blocker for ipp web site. Please choose which printer you want to use and click printer name.



After clicking the printer name fill username and password on popped window.

After successful login another popup will appear.
Click yes to continue

Notice : unselect "set printer as default" check box if you have another printer as a default.

Printer software will be installed automatically, click OK to finish installation.

You will see the installed printer in your printer's folder

